

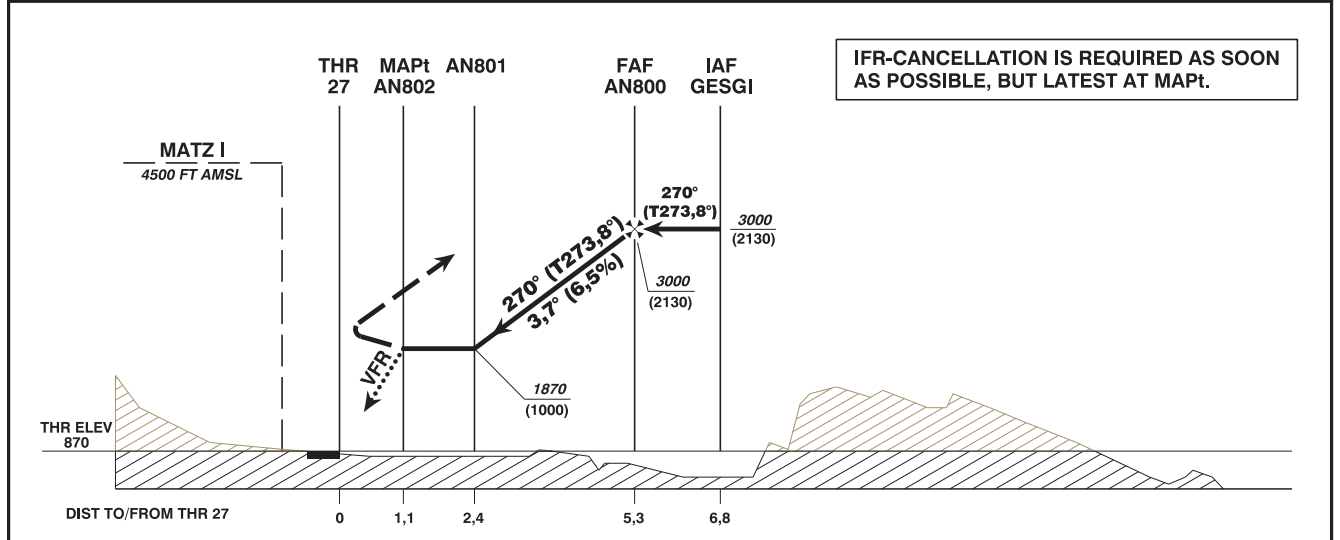
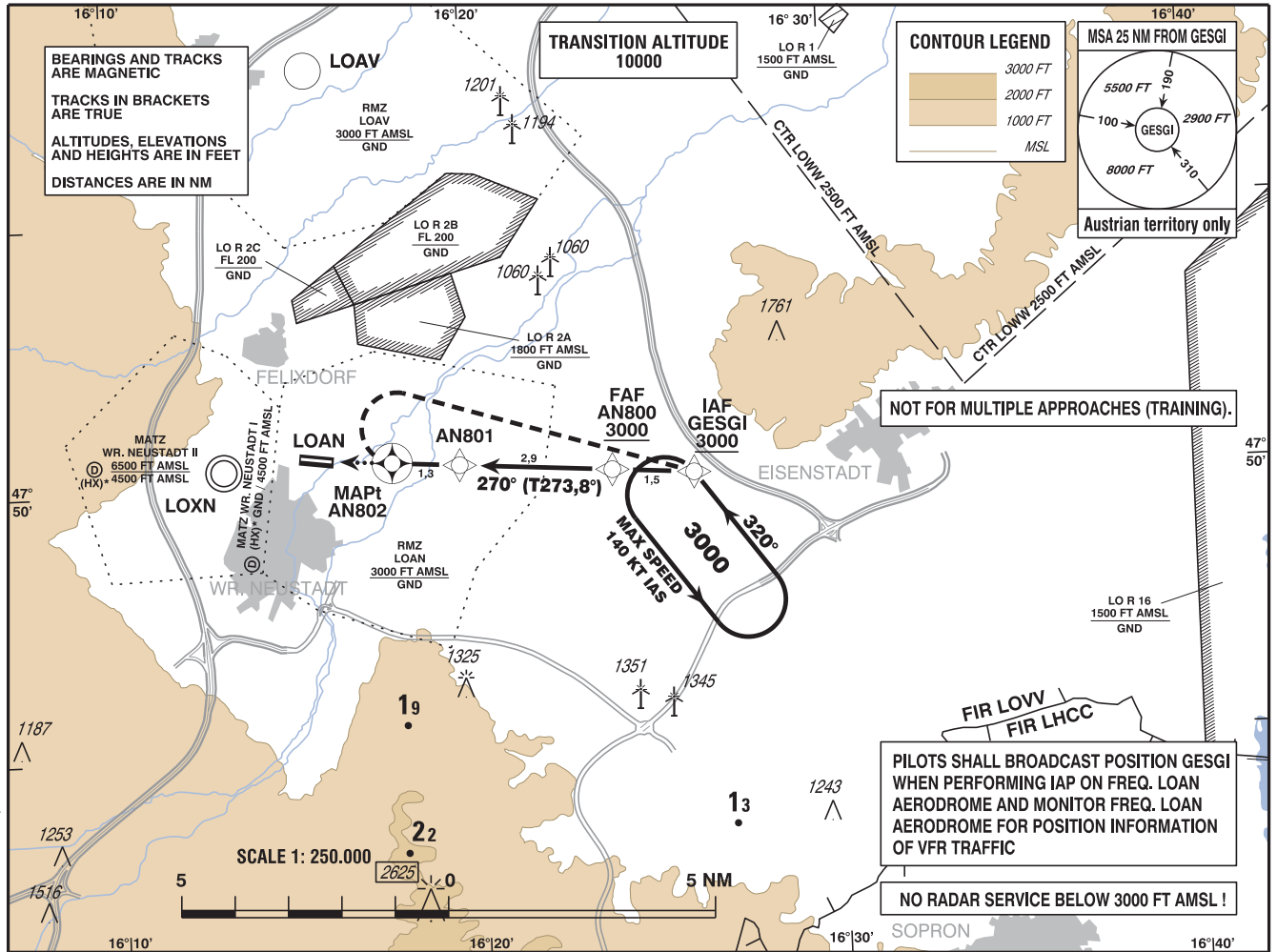
INSTRUMENT APPROACH CHART

VAR 4° E

AD ELEV 896 FT
THR 27 ELEV 870 FT
HGT RELATED TO THR ELEV

RADAR 134.675 MHZ
129.050 MHZ
TFI 118.525 MHZ
WR. NEUSTADT OST AD 122.650 MHZ

WR. NEUSTADT/OST
ÖSTERREICH AUSTRIA
RNAV (GNSS) 270
CAT A / B



MISSED APPROACH: AT AN802 TURN RIGHT TO GESGI; CLIMB 3000 FT AMSL AND HOLD.

NOTE: MISSED APPROACH SPEED LIMITED TO MAX IAS 140 KT.

MDA (MDH) IN FT	A	B	AN800 to AN801 - DISTANCE 2,9 NM					
			GS (KT)	80	100	120	140	
LNAV	1870 (1000)		AN800 - AN801	MIN : SEC	2:09	1:43	1:26	1:14
			Rate of descent (6,5%)	FT / MIN	520	650	780	910

VFR PART: SEE CHART FOR VFR FLIGHTS (LOAN AD 2.24-7-2)

Instrument Approach Procedure Coding Table Wr. Neustadt/Ost RNAV (GNSS) 270										
Path Terminator	Waypoint				Course/ Track ° MAG (° True)	DIST NM	Turn Direction	Constraints		Remarks
	Identifier	Type	Flyover	Coordinates				Level	Speed	
IF	GESGI	IAF	no	N475007.54 E0162606.57				<u>3000 FT MSL</u>		also MAHF (DF from AN802)
TF	AN800	FAF	no	N475013.59 E0162350.25	270° (273.8°)	1.5		<u>3000 FT MSL</u>		
TF	AN801		no	N475024.74 E0161935.87	270° (273.8°)	2.9				
TF	AN802	MAPt	yes	N475029.62 E0161743.31	270° (273.8°)	1.3	right		K140-	
RNAV Holding										
Holding Point	Inbound Track ° True	Inbound Track ° MAG	Turn Direction	MAX IAS	Minimum Holding Altitude FT MSL / FL	Time	DIST NM	Remarks		
GESGI	323.8°	320°	left	140 KT	3000 FT MSL	1 MIN				
THR Coordinates										
RWY 09	N475038.00 E0161511.00									
RWY 27	N475034.00 E0161602.00									